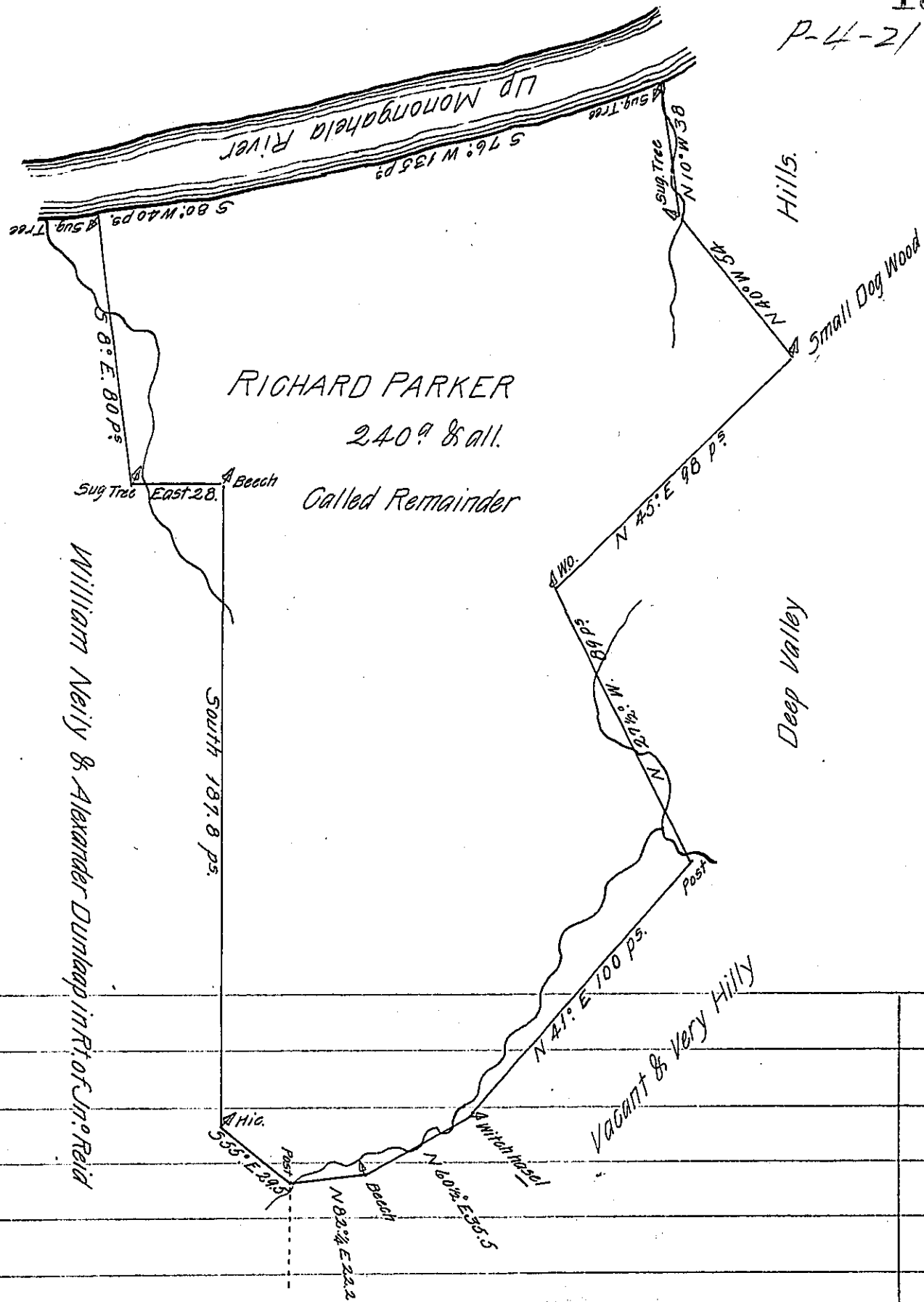


P-4-21



Situated on the East Side of Monongahela River in the lower End of Kelly's Bottom in the New purchase Bedford County & Survey'd the 14th day of November 1774 By order of Survey N^o 1008 dated the 3^d day of April 1769.

By A. Lane Dept. 5.

To John Lukens Esq. Surv. G.

IN TESTIMONY that the above is a copy of the original remaining on file in the Department of Internal Affairs of Pennsylvania, made conformably to an Act of Assembly approved the 16th day of February, 1833, I have hereunto set my Hand and caused the Seal of said Department to be affixed at Harrisburg, this twentysixth day of October 1905.

Loac O Brown
Secretary of Internal Affairs.